

EVIO Labs Medford (pka Kenevir Research)
 540 East Vilas Road, Suite F, Central Point, OR 97502
 541-668-7444 / OLCC 010-1001626980D / www.EVIOLabs.com

Cherry Chocolate Chip

Pure Relief

Info Only



Confident Cannabis ID: 2011KR0066.5945

Sample ID: M201850-05

Matrix: Hemp

METRC Batch #:

Sampling Method/SOP: Client

Date Sampled: NA

Date Accepted: 11/10/20

Harvest/Process Lot ID:

Batch ID:

Batch Size (g):

Unit for Sale:

Harvest/Production Date:

Cannabinoid Analysis

FOR INFORMATIONAL USE ONLY - NOT FOR REGULATORY PURPOSES

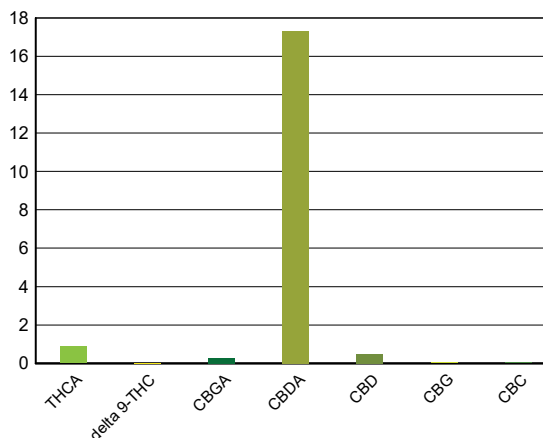
Date/Time Extracted: 11/11/20 09:29

Analysis Method/SOP: SOP.T.40.020

Date/Time Analyzed: 11/12/20 06:39

Cannabinoids	LOQ(%)	mg/g	% weight	Cannabinoid Profile
Total THC ((THCA*0.877)+Δ9THC)		7.73	0.773	
Total CBD ((CBDA*0.877)+CBD)		156.61	15.661	

THCA	0.0400	8.81	0.881
delta 9-THC	0.0400	< LOQ	< LOQ
delta 8-THC	0.0400	< LOQ	< LOQ
THCV	0.0400	< LOQ	< LOQ
CBGA	0.0400	2.76	0.276
CBDA	0.0400	173.00	17.3
CBD	0.0400	4.89	0.489
CBDV	0.0400	< LOQ	< LOQ
CBN	0.0400	< LOQ	< LOQ
CBG	0.0400	0.47	0.0470
CBC	0.0400	0.42	0.0416
THCV-A	0.0400	< LOQ	< LOQ
CBDV-A	0.0400	0.40	0.0403
CBCA	0.0400	7.97	0.797
Sum of tested Cannabinoids	0.0400	198.00	19.8



Moisture Content

Date/Time Analyzed: 11/11/20 00:00
 Analysis Method/SOP: SOP.T.40.010

Moisture: 11.7 %

"Total THC" and "Total CBD" are calculated values and are an Oregon reporting requirement (OAR 333-064-0100). For Cannabinoid analysis, only delta 9-THC, THCA, CBD, CBDA are ORELAP accredited analytes. Cannabinoid values reported for plant matter are dry weight corrected; Oregon Water Activity action level is 0.65Aw and Oregon Moisture Content action level is 15%, Samples above limit will be highlighted RED; FD = Field Duplicate; LOQ = Limit of Quantitation.

Stephanie Moon
 Laboratory Director - 11/16/2020

EVIO Labs Medford (pka Kenevir Research)
 540 East Vilas Road, Suite F, Central Point, OR 97502
 541-668-7444 / OLCC 010-1001626980D / www.EVIOLabs.com

Quality Control

Batch: M20K061 - SOP.T.30.050 Prep for Cannabinoids

Blank(M20K061-BLK1)			Extracted: 11/11/20 09:29		Analyzed: 11/12/20 02:34		
Analyte	Result	LOQ	Recovery Limits	Analyte	Result	LOQ	Recovery Limits
THCA	< LOQ	0.0400 (%)	< LOQ	delta 9-THC	< LOQ	0.0400 (%)	< LOQ
delta 8-THC	< LOQ	0.0400 (%)	< LOQ	THCV-A	< LOQ	0.0400 (%)	< LOQ
THCV	< LOQ	0.0400 (%)	< LOQ	CBDA	< LOQ	0.0400 (%)	< LOQ
CBD	< LOQ	0.0400 (%)	< LOQ	CBDV-A	< LOQ	0.0400 (%)	< LOQ
CBDV	< LOQ	0.0400 (%)	< LOQ	CBG	< LOQ	0.0400 (%)	< LOQ
CBGA	< LOQ	0.0400 (%)	< LOQ	CBN	< LOQ	0.0400 (%)	< LOQ
CBCA	< LOQ	0.0400 (%)	< LOQ	CBC	< LOQ	0.0400 (%)	< LOQ
Sum of tested Cannabinoid:	< LOQ	0.0400 (%)	< LOQ				

LCS(M20K061-BS1)			Extracted: 11/11/20 09:29		Analyzed: 11/12/20 02:50		
Analyte	% Recovery	LOQ	Recovery Limits	Analyte	% Recovery	LOQ	Recovery Limits
THCA	94.6	(%)	70-130	delta 9-THC	97.7	(%)	70-130
THCV	99.6	(%)	70-130	CBDA	96.9	(%)	70-130
CBD	98.1	(%)	70-130	CBG	97.6	(%)	70-130
CBGA	95.9	(%)	70-130	CBN	111	(%)	70-130
CBCA	100	(%)	70-130	CBC	98.1	(%)	70-130

Batch: M20K062 - SOP.T.40.010 Moisture Content

Blank(M20K062-BLK1)			Extracted: 11/11/20 00:00		Analyzed: 11/11/20 00:00		
Analyte	Result	LOQ	Recovery Limits	Analyte	Result	LOQ	Recovery Limits
Percent Moisture	100	(%)	< LOQ				



Stephanie Moon
 Laboratory Director - 11/16/2020