

EVIO Labs Medford (pka Kenevir Research)  
 540 East Vilas Road, Suite F, Central Point, OR 97502  
 541-668-7444 / OLCC 010-1001626980D / www.EVIOLabs.com

## Peach Mint Kush

*Pure Relief*

*Info Only*



Confident Cannabis ID: 2011KR0066.5941

Sample ID: M201850-01

Matrix: Hemp

METRC Batch #:

Sampling Method/SOP: Client

Date Sampled: NA

Date Accepted: 11/10/20

Harvest/Process Lot ID:

Batch ID:

Batch Size (g):

Unit for Sale:

Harvest/Production Date:

### Cannabinoid Analysis

**FOR INFORMATIONAL USE ONLY - NOT FOR REGULATORY PURPOSES**

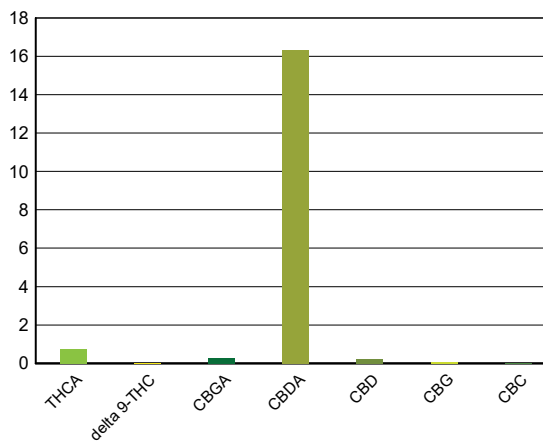
Date/Time Extracted: 11/11/20 09:29

Analysis Method/SOP: SOP.T.40.020

Date/Time Analyzed: 11/12/20 05:34

Cannabinoids	LOQ(%)	mg/g	% weight	Cannabinoid Profile
<b>Total THC</b> ((THCA*0.877)+Δ9THC)		<b>6.67</b>	<b>0.667</b>	
<b>Total CBD</b> ((CBDA*0.877)+CBD)		<b>145.35</b>	<b>14.535</b>	

THCA	0.0400	7.61	0.761
delta 9-THC	0.0400	< LOQ	< LOQ
delta 8-THC	0.0400	< LOQ	< LOQ
THCV	0.0400	< LOQ	< LOQ
CBGA	0.0400	3.00	0.300
CBDA	0.0400	163.00	16.3
CBD	0.0400	2.40	0.240
CBDV	0.0400	< LOQ	< LOQ
CBN	0.0400	< LOQ	< LOQ
CBG	0.0400	0.54	0.0539
CBC	0.0400	< LOQ	< LOQ
THCV-A	0.0400	< LOQ	< LOQ
CBDV-A	0.0400	< LOQ	< LOQ
CBCA	0.0400	9.71	0.971
Sum of tested Cannabinoids	0.0400	187.00	18.7



### Moisture Content

Date/Time Analyzed: 11/11/20 00:00  
 Analysis Method/SOP: SOP.T.40.010

**Moisture: 10.6 %**

"Total THC" and "Total CBD" are calculated values and are an Oregon reporting requirement (OAR 333-064-0100). For Cannabinoid analysis, only delta 9-THC, THCA, CBD, CBDA are ORELAP accredited analytes. Cannabinoid values reported for plant matter are dry weight corrected; Oregon Water Activity action level is 0.65Aw and Oregon Moisture Content action level is 15%, Samples above limit will be highlighted RED; FD = Field Duplicate; LOQ = Limit of Quantitation.

Stephanie Moon  
 Laboratory Director - 11/16/2020

EVIO Labs Medford (pka Kenevir Research)  
 540 East Vilas Road, Suite F, Central Point, OR 97502  
 541-668-7444 / OLCC 010-1001626980D / www.EVIOLabs.com

FOR INFORMATIONAL USE ONLY - NOT FOR REGULATORY PURPOSES

## Peach Mint Kush

Hemp Worldwide

Info Only

Sample ID: M201850-01 METRC Batch #:

Matrix: Hemp

Date Sampled: NA

Date Accepted: 11/10/20

Batch ID:

Batch Size:

Sampling Method/SOP: Client

### Terpene Analysis

Date/Time Extracted: 11/13/20 12:54

Analysis Method/SOP: SOP.T.40.092

Date/Time Analyzed: 11/16/20 11:05

Analyte	LOQ (mg/g)	Mass (mg/g)	Mass (%)	Analyte	LOQ (mg/g)	Mass (mg/g)	Mass (%)
alpha-Pinene	0.200	1.86	0.186	beta-Pinene	0.200	0.795	0.0795
Camphene	0.200	< LOQ	< LOQ	Sabinene	0.200	< LOQ	< LOQ
Sabinene hydrate	0.200	< LOQ	< LOQ	beta-Myrcene	0.200	10.9	1.09
p-Mentha-1,5-diene	0.200	< LOQ	< LOQ	(+)-3-Carene	0.200	< LOQ	< LOQ
alpha-Terpinene	0.200	< LOQ	< LOQ	gamma-Terpinene	0.200	< LOQ	< LOQ
Limonene	0.200	1.09	0.109	Eucalyptol	0.200	< LOQ	< LOQ
Guaiol	0.200	< LOQ	< LOQ	Terpinolene	0.200	< LOQ	< LOQ
Linalool	0.200	< LOQ	< LOQ	Camphor	0.200	< LOQ	< LOQ
(+)-Camphor	0.200	< LOQ	< LOQ	(-)-Camphor	0.200	< LOQ	< LOQ
Isopulegol	0.200	< LOQ	< LOQ	Isoborneol	0.200	< LOQ	< LOQ
Borneol	0.200	< LOQ	< LOQ	Hexahydrothymol	0.200	< LOQ	< LOQ
Geraniol	0.200	< LOQ	< LOQ	(+)-Pulegone	0.200	< LOQ	< LOQ
Nerol	0.200	< LOQ	< LOQ	cis-Nerolidol	0.200	< LOQ	< LOQ
trans-Nerolidol	0.200	< LOQ	< LOQ	Geranyl acetate	0.200	< LOQ	< LOQ
alpha-Cedrene	0.200	< LOQ	< LOQ	trans-Caryophyllene	0.200	2.27	0.227
Caryophyllene Oxide	0.200	0.296	0.0296	alpha-Humulene	0.200	0.820	0.082
Valencene	0.200	< LOQ	< LOQ	alpha-Farnesene	0.200	< LOQ	< LOQ
beta-Farnesene	0.200	< LOQ	< LOQ	Cedrol	0.200	< LOQ	< LOQ
alpha-Bisabolol	0.200	1.64	0.164	Fenchone	0.200	< LOQ	< LOQ
Fenchyl Alcohol	0.200	0.218	0.0218	trans, beta- Ocimene	0.200	< LOQ	< LOQ
beta, cis- Ocimene	0.200	< LOQ	< LOQ	Terpineol	0.200	0.345	0.0345
Total (Sum):						20.23	2.02

Analysis performed on GCMS with confirmation ion identification. Terpene analysis is not ORELAP accredited. Results reported as dry weight. LOQ = Limit of Quantitation. Terpene analysis performed in conjunction with EVIO Labs Portland.



Stephanie Moon  
 Laboratory Director - 11/16/2020

Page 2 of 4

**EVIO Labs Medford (pka Kenevir Research)**  
**540 East Vilas Road, Suite F, Central Point, OR 97502**  
**541-668-7444 / OLCC 010-1001626980D / www.EVIOLabs.com**

## Quality Control

### Batch: M20K061 - SOP.T.30.050 Prep for Cannabinoids

Blank(M20K061-BLK1)			Extracted: 11/11/20 09:29		Analyzed: 11/12/20 02:34		
Analyte	Result	LOQ	Recovery Limits	Analyte	Result	LOQ	Recovery Limits
THCA	< LOQ	0.0400 (%)	< LOQ	delta 9-THC	< LOQ	0.0400 (%)	< LOQ
delta 8-THC	< LOQ	0.0400 (%)	< LOQ	THCV-A	< LOQ	0.0400 (%)	< LOQ
THCV	< LOQ	0.0400 (%)	< LOQ	CBDA	< LOQ	0.0400 (%)	< LOQ
CBD	< LOQ	0.0400 (%)	< LOQ	CBDV-A	< LOQ	0.0400 (%)	< LOQ
CBDV	< LOQ	0.0400 (%)	< LOQ	CBG	< LOQ	0.0400 (%)	< LOQ
CBGA	< LOQ	0.0400 (%)	< LOQ	CBN	< LOQ	0.0400 (%)	< LOQ
CBCA	< LOQ	0.0400 (%)	< LOQ	CBC	< LOQ	0.0400 (%)	< LOQ
Sum of tested Cannabinoid:	< LOQ	0.0400 (%)	< LOQ				

LCS(M20K061-BS1)			Extracted: 11/11/20 09:29		Analyzed: 11/12/20 02:50		
Analyte	% Recovery	LOQ	Recovery Limits	Analyte	% Recovery	LOQ	Recovery Limits
THCA	94.6	(%)	70-130	delta 9-THC	97.7	(%)	70-130
THCV	99.6	(%)	70-130	CBDA	96.9	(%)	70-130
CBD	98.1	(%)	70-130	CBG	97.6	(%)	70-130
CBGA	95.9	(%)	70-130	CBN	111	(%)	70-130
CBCA	100	(%)	70-130	CBC	98.1	(%)	70-130

### Batch: M20K062 - SOP.T.40.010 Moisture Content

Blank(M20K062-BLK1)			Extracted: 11/11/20 00:00		Analyzed: 11/11/20 00:00		
Analyte	Result	LOQ	Recovery Limits	Analyte	Result	LOQ	Recovery Limits
Percent Moisture	100	(%)	< LOQ				

### Batch: P20K079 - SOP.T.40.092 PDX Terpenoid Analysis via GC-MS

Blank(P20K079-BLK1)			Extracted: 11/13/20 12:54		Analyzed: 11/16/20 11:05		
Analyte	Result	LOQ	Recovery Limits	Analyte	Result	LOQ	Recovery Limits
alpha-Pinene	< LOQ	0.200 (mg/g)	< LOQ	beta-Pinene	< LOQ	0.200 (mg/g)	< LOQ
Camphene	< LOQ	0.200 (mg/g)	< LOQ	Sabinene	< LOQ	0.200 (mg/g)	< LOQ
Sabinene hydrate	< LOQ	0.200 (mg/g)	< LOQ	beta-Myrcene	< LOQ	0.200 (mg/g)	< LOQ
p-Mentha-1,5-diene	< LOQ	0.200 (mg/g)	< LOQ	(+)-3-Carene	< LOQ	0.200 (mg/g)	< LOQ
alpha-Terpinene	< LOQ	0.200 (mg/g)	< LOQ	gamma-Terpinene	< LOQ	0.200 (mg/g)	< LOQ
Limonene	< LOQ	0.200 (mg/g)	< LOQ	Eucalyptol	< LOQ	0.200 (mg/g)	< LOQ
Guaiol	< LOQ	0.200 (mg/g)	< LOQ	Terpinolene	< LOQ	0.200 (mg/g)	< LOQ
Linalool	< LOQ	0.200 (mg/g)	< LOQ	Camphor	< LOQ	0.200 (mg/g)	< LOQ
(+)-Camphor	< LOQ	0.200 (mg/g)	< LOQ	(-)-Camphor	< LOQ	0.200 (mg/g)	< LOQ
Isopulegol	< LOQ	0.200 (mg/g)	< LOQ	Isoborneol	< LOQ	0.200 (mg/g)	< LOQ
Borneol	< LOQ	0.200 (mg/g)	< LOQ	Hexahydrothymol	< LOQ	0.200 (mg/g)	< LOQ
Geraniol	< LOQ	0.200 (mg/g)	< LOQ	(+)-Pulegone	< LOQ	0.200 (mg/g)	< LOQ
Nerol	< LOQ	0.200 (mg/g)	< LOQ				



Stephanie Moon  
 Laboratory Director - 11/16/2020

EVIO Labs Medford (pka Kenevir Research)  
 540 East Vilas Road, Suite F, Central Point, OR 97502  
 541-668-7444 / OLCC 010-1001626980D / www.EVIOLabs.com

## Quality Control

**Batch: P20K079 - SOP.T.40.092 PDX Terpenoid Analysis via GC-MS (Continued)**

Blank(P20K079-BLK1)			Extracted: 11/13/20 12:54		Analyzed: 11/16/20 11:05		
Analyte	Result	LOQ	Recovery Limits	Analyte	Result	LOQ	Recovery Limits
cis-Nerolidol	< LOQ	0.200 (mg/g)	< LOQ	trans-Nerolidol	< LOQ	0.200 (mg/g)	< LOQ
Geranyl acetate	< LOQ	0.200 (mg/g)	< LOQ	alpha-Cedrene	< LOQ	0.200 (mg/g)	< LOQ
trans-Caryophyllene	< LOQ	0.200 (mg/g)	< LOQ	Caryophyllene Oxide	< LOQ	0.200 (mg/g)	< LOQ
alpha-Humulene	< LOQ	0.200 (mg/g)	< LOQ	Valencene	< LOQ	0.200 (mg/g)	< LOQ
alpha-Farnesene	< LOQ	0.200 (mg/g)	< LOQ	beta-Farnesene	< LOQ	0.200 (mg/g)	< LOQ
Cedrol	< LOQ	0.200 (mg/g)	< LOQ	alpha-Bisabolol	< LOQ	0.200 (mg/g)	< LOQ
Fenchone	< LOQ	0.200 (mg/g)	< LOQ	Fenchyl Alcohol	< LOQ	0.200 (mg/g)	< LOQ
trans, beta- Ocimene	< LOQ	0.200 (mg/g)	< LOQ	beta, cis- Ocimene	< LOQ	0.200 (mg/g)	< LOQ
Terpineol	< LOQ	0.200 (mg/g)	< LOQ				



Stephanie Moon  
 Laboratory Director - 11/16/2020